

Putting Every Student on the Path to a Happy, Successful and Fulfilling Life

SKEGNESS ACADEMY SIXTH FORM

PROSPECTUS

2025



SKEGNESS ACADEMY

CONTENT

02 - WELCOME

03 - ABOUT US

04 - OUR CURRICULUM

05 - COURSES

24 - STUDENT LEADERSHIP TEAM

25 - ENRICHMENT OPPORTUNITIES

26 - CAREER GUIDANCE

27 - GUIDANCE AND SUPPORT

**28 - JOIN OUR SIXTH FORM AND BUILD YOUR
FUTURE WITH US**

WELCOME

I am exceptionally proud to be the Principal of the Skegness Academy, where we maintain a very clear vision:

'We want to put every student on the path to a happy, successful and fulfilling life'.

At Sixth Form, this means that we want all of our students to achieve a strong set of Level 3 qualifications to enable them to progress to a post-18 option of their choice, whether it be university, apprenticeship or employment. At the same time, we want every student to acquire the skills necessary to function successfully as a member of society, aspire to achieve all their dreams and make a positive contribution to society. To achieve these aims, our excellent Sixth Form team, led by Miss Langdale and Mrs Hunt, provides exceptional academic and pastoral support and guidance to ensure that all students achieve their very best. In addition, our students will benefit from a comprehensive and varied enrichment programme, offering opportunities to develop interpersonal skills and enhance their CVs and personal statements.

I fully understand the importance of the decision you are now making for your future plans after compulsory education has ended. I invite you to contact the Sixth Form team and arrange for a personal visit to see us 'as is' and 'in action'. I am confident that when you visit us and watch our students in action, you will select the Skegness Academy Sixth Form as your first choice.

I look forward to seeing you in September. In the meantime, I wish you success in your summer exams.

Mr C Gissendorf
Principal

ABOUT US

Dear Prospective Sixth Form Student



EXCELLENCE



RESPECT



PERSONAL RESPONSIBILITY



GRATITUDE

'We're an inclusive Sixth Form, embracing diversity and empowering all students. With a broad selection of courses, we're here to help you pursue your ambitions.'

At the Skegness Academy, we believe the next two years will be among the most important in your life. This is your time to focus on your dreams and begin turning them into reality. Our Sixth Form offers a welcoming, inspiring, and supportive environment where every student has the opportunity to thrive, regardless of their background.

Our students are thought of as young adults, but young adults who need support, challenge and direction in helping them reach their full potential. We're driven by hard work and dedication of both students and staff in ensuring we are putting every student on the path to a happy, successful and fulfilling life. We prepare and support all our students for their next steps in life, whether that be university, apprenticeship, or employment.

You'll be studying subjects you are passionate about and making crucial decisions about your future. We're here to provide comprehensive academic and pastoral support to help make your goals a reality. We're committed to standing by you every step of the way on this important journey.

We look forward to welcoming you in September.

Best of luck with your summer exams!

Miss K Langdale
Head of Sixth Form

OUR CURRICULUM

Sixth Form Course

All courses at Skegness Academy are two years in length. Please note that the Academy reserves the right to withdraw a course if there is insufficient student interest or if teaching staff availability changes.

Vocational

BTEC National Extended Certificate Applied Law

BTEC National Extended Certificate Applied Science

BTEC National Extended Certificate Art and Design

BTEC National Diploma Art and Design

BTEC National Extended Diploma Applied Art and Design

BTEC National Extended Certificate Children's Play, Learning and Development

OCR Cambridge Technical Extended Certificate Health and Social Care

BTEC National Extended Certificate Information Technology

BTEC National Extended Certificate Performing Arts

BTEC National Diploma Applied Performing Arts

BTEC National Extended Diploma Performing Arts

OCR Cambridge Technical Extended Certificate Sport and Physical Activity

OCR Cambridge Technical Diploma Sport and Physical Activity

OCR Cambridge Technical Extended Diploma Sport and Physical Activity

BTEC National Extended Certificate Travel and Tourism

A Level

English Literature

History

Mathematics

Sociology

Selecting the right courses requires

When choosing subjects, it's important to focus on those you've enjoyed and excelled in, as this sets a strong foundation for continued success. Ensure the courses cover topics that genuinely interest you and offer the right balance of coursework and exams to match your learning style. Also, consider how well each course prepares you for your preferred university or career path. It's beneficial to discuss your options with your subject teacher, Head of Faculty, or Head of Sixth Form to gain insight and make informed choices.

Which subject do I need for my future?

The subjects you select in Sixth Form play a crucial role in shaping your future opportunities. Whether your goal is a university degree, an apprenticeship, or employment, it's essential to understand the entry requirements and ensure your chosen subjects meet these requirements. In many careers, a specific level of education is necessary, so take time to research thoroughly and understand what is expected to reach your goals.

Courses Available in Sixth Form

At the Skegness Academy, three types of courses are available for Sixth Form students:

Vocational Courses

A-Level Courses

GCSE Resit Courses (English and Mathematics only)

For students who have not met the entry requirements for Level 3 courses, there is an option to repeat the Level 2 pathway.

Please note that the GCSE English requirement can be met through either GCSE English Language or GCSE English Literature. However, if a grade 4 has not been achieved in GCSE English Language, a resit will be required.

APPLIED LAW

BTEC National Extended Certificate



Entry Requirements

For entrance onto this course, you will need a minimum of five GCSEs including Maths at grade 4 or above and English at grade 5 or above.

Course overview

The course includes the opportunity to develop research, communication, presentation, decision-making and critical-thinking skills valued by higher education and employers. The courses covers the following content areas:

- dispute solving in civil law
- investigating aspects of criminal law and the legal system
- applying the law
- contract law

First year

Externally assessed unit 1: dispute solving in civil law.

- Exploring how the law of negligence is dealt with.

Internally assessed unit 2: investigating aspects of criminal law and the legal system.

- Will give you an understanding of the way the criminal justice system works in the United Kingdom.

Second year

Externally assessed unit 3: applying the law.

- Focuses on criminal offences including fatal offences and offences against property.

Internally assessed unit 6: contract law

- Will help you to understand how contracts are formed and why they are so vital.

Assessment structure

Assessment involves both internally assessed units of study and externally assessed, set tasks.

Internal assessment is carried out by a specialist teacher following their deadline and will be marked using pass, merit or distinction gradings.

External assessment involves set tasks provided and marked by the exam board. These will also be marked using pass, merit or distinction gradings.

Once all internal and external units have been completed, the individual marks are combined to calculate a student's overall grading. Students must grade on all parts of the course in order to achieve a qualification.

What could this lead to?

Studying law supports a foundation for university and careers across various fields, including journalism, government, public relations, teaching, management, and business. This qualification not only provides UCAS points but, when combined with other qualifications in a two-year learning program, can meet the admission criteria for numerous higher education courses. Additionally, it serves as a pathway to direct employment or progression through an Apprenticeship, broadening opportunities in multiple sectors.

APPLIED SCIENCE

BTEC National Extended Certificate



Entry Requirements

For entrance onto this course, you will need a minimum science grade of 5,5 or above and a minimum of four other GCSEs including Maths and English at grade 4 or above.

Course overview

The Applied Science course enables students to study principles and applications of biology, chemistry and physics as well as practical scientific procedures and techniques. On this course you will be studying biology, chemistry, and physics without specialising in one. It focuses on scientific techniques, problem-solving, teamwork, and data interpretation.

First year

Externally assessed unit 1: principles and applications of biology.

Externally assessed unit 2: principles and applications of chemistry.

Externally assessed unit 3: principles and applications of physics. Covering key concepts in biology, chemistry and physics. This unit concludes with a two-hour written assessment.

Second year

Internally assessed unit 4: practical scientific procedures and techniques. Introduction to quantitative laboratory techniques, calibration, chromatography, calorimetry and laboratory safety, which are all relevant to the chemical and life science industries.

Internally assessed unit 5: science investigation skills. Developing the skills needed in planning a scientific investigation: how to record, interpret, draw scientific conclusions and evaluate.

Assessment structure

Assessment involves both internally assessed units of study and externally assessed, set tasks. There are three examined units and two internally assessed units where students engage in practical tasks to develop their scientific skills and knowledge.

Internal assessment is carried out by a specialist teacher following their deadline and will be marked using pass, merit or distinction gradings. External assessment involves set tasks provided and marked by the exam board. These will also be marked using pass, merit or distinction gradings.

Once all internal and external units have been completed, the individual marks are combined to calculate a student's overall grading. These will include Pass (E), Merit (C), Distinction (A) or Distinction* (A*). Students must grade on all parts of the course in order to achieve a qualification. The internally assessed parts of the course equate to 50% of the qualification while external assessment equates to 50%.

What could this lead to?

This course can also be counted towards entry for a degree or apprenticeship in areas such as Biology, Chemistry, Physics, Medical Science, Forensic Science, Physiology, Psychology, Biochemistry, Laboratory Scientist, Paediatric and Adult Nursing, Criminology, Radiology, Teaching and Sports Science. It is advised that you check UCAS entry requirements for degree courses you are interested in to ensure that this course would support higher education applications.



ART AND DESIGN

BTEC National Extended Certificate

Entry Requirements

For entrance onto this course, you will need a minimum of five GCSEs including Maths and English at grade 4 or above.

Course overview

This course offers practical and theoretical knowledge in drawing, painting, digital art, design, and art history. Students will explore career opportunities in the creative industries and participate in enrichment activities, including trips and interactions with contemporary artists. It is ideal for those wanting to continue their education while studying other subjects, preparing them for higher education and careers in this fast-growing sector.

First year

Internally Assessed, Unit 12: Fine Art Materials, Techniques and Processes. Studied as part of a thematic project to begin students first year of study.

Externally Assessed, Unit 1: Visual Communication in Art and Design. A practical exploration of a theme provided by the exam board with a controlled written period of three hours of assessment at the end.

Second year

Internally Assessed, Unit 3: The Creative Process. A thematic project exploring the processes needed to be successful in Art and Design.

Externally Assessed, Unit 2: Critical and Contextual References in Art and Design. A theoretical exploration of a range of artists with a written study over three and a half hours, completed for final assessment.

Assessment structure

There are both internally and externally assessed units, studied across both years of the qualification. Internally assessed units are studied at the beginning of each academic year. These are thematic and will allow you to respond in a personal way, taking into consideration the requirements of the brief. Externally assessed units are set and marked by the exam board and take place in the second half of the academic year.

There are a number of compulsory and optional units studied over the two-year period which will result in the completion of your qualification. You are required to grade on each unit to qualify for your final result. These are a combination of both written and practical assessments with differing time limits.

What could this lead to?

Art and design can lead to various careers in the creative industries, such as Illustration, Photography, Architecture, Graphic Design, Animation, Game Design, Film, Prop Design, and Art Conservation. Studying art enhances creative problem-solving skills and understanding of complex concepts, which are valuable across multiple fields. Completing an art and design course opens up opportunities for further education, employment, and apprenticeships. A portfolio showcasing your work will be essential for future study or employment.

ART AND DESIGN

BTEC National Diploma



Entry Requirements

For entrance onto this course, you will need a minimum of five GCSEs including Maths and English at grade 4 or above.

Course overview

This course offers practical and theoretical knowledge in drawing, painting, digital art, design, and art history. Students will explore career opportunities in the creative industries and participate in enrichment activities, including trips and interactions with contemporary artists. It is ideal for those wanting to continue their education while studying other subjects, preparing them for higher education and careers in this fast-growing sector.

First year

Internally Assessed, Unit 3: The Creative Process and Unit 12: Fine Art Materials, Techniques and Processes. Studied together as part of a thematic project to begin students first year of study.

Externally Assessed, Unit 1: Visual Communication in Art and Design. A practical exploration of a theme provided by the exam board with. A controlled written period of three hours of assessment at the end.

Externally Assessed, Unit 2: Critical and Contextual References in Art and Design. A theoretical exploration of a range of artists with a written study over three and a half hours, completed for final assessment.

Second year

Internally Assessed, Unit 5: Developing and Art and Design Portfolio. A project dedicated to learning about, developing and building a portfolio ready for future study or employment.

Internally Assessed, Unit 4: Materials, Techniques and Processes in Art and Design. A thematic project exploring two-dimensional materials techniques and processes, building on skills learned during the first year.

Internally Assessed, Unit 13: 3D Design Materials, Techniques and Processes. Exploration of the use of three-dimensional materials, techniques and processes around a theme.

Externally Assessed, Unit 7: Developing and Realising Creative Intentions. A practical synoptic assessment set over a number of weeks where students will respond to a theme released by the exam board. This will also be the conclusion to the programme of study for all students.

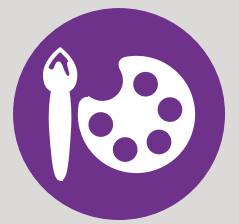
Assessment structure

There are both internally and externally assessed units, studied across both years of the qualification. Internally assessed units are studied at the beginning of each academic year. These are thematic and will allow you to respond in a personal way, taking into consideration the requirements of the brief. Externally assessed units are set and marked by the exam board and take place in the second half of the academic year. These are a combination of both written and practical assessments with differing time limits.

There are a number of compulsory and optional units studied over the two-year period which will result in the completion of your qualification. You are required to grade on each unit to qualify for your result.

What could this lead to?

Art and design can lead to various careers in the creative industries, such as Illustration, Photography, Architecture, Graphic Design, Animation, Game Design, Film, Prop Design, and Art Conservation. Studying art enhances creative problem-solving skills and understanding of complex concepts, which are valuable across multiple fields. Completing an art and design course opens up opportunities for further education, employment, and apprenticeships. A portfolio showcasing your work will be essential for future study or employment.



ART AND DESIGN

BTEC National Extended Diploma

Entry Requirements

For entrance onto this course, you will need a minimum of five GCSEs including Maths and English at grade 4 or above.

Course overview

This course offers practical and theoretical knowledge in drawing, painting, digital art, design, and art history. Students will explore career opportunities in the creative industries and participate in enrichment activities, including trips and interactions with contemporary artists. It is ideal for those wanting to continue their education while studying other subjects, preparing them for higher education and careers in this fast-growing sector.

First year

In the first year of study you will complete three different thematic projects based around digital, two and three-dimensional design. The projects themselves allow for you to personalise the route you take, being independent in your choices of artists who influence you as well as the response you wish to create as your outcome. You will have to work with a client in mind for each so that you fully understand the vocational aspect of the course but this is always made clear in your assignment brief at the beginning of each project.

To conclude the first year of study you will take part in two external assessments, set and marked by the exam board. The first contains practical and reflective tasks that result in a portfolio of work submitted to the exam board for assessment. The second is a theoretical exam where your comparative and analytical skills are put to the test.

Second year

In the second year there will be further three, thematic projects based on developing your printing and painting skills as well as improving your understanding of contemporary fine artists.

Additionally, you will be led in creating your art and design portfolio and putting together an exhibition of your artwork accumulated over the course.

To conclude the second year, you will take part in two further external assessments set and marked by the exam board. The first is an assessment of how well you respond to a client brief and will observe how you make proposals for these. The second is a thematic project assessed on your practical abilities.

Assessment structure

There are both internally and externally assessed units, studied across both years of the qualification. Internally assessed units are studied at the beginning of each academic year. These are thematic and will allow you to respond in a personal way, taking into consideration the requirements of the brief. Externally assessed units are set and marked by the exam board and take place in the second half of the academic year. These are a combination of both written and practical assessments with differing time limits.

There are a number of compulsory and optional units studied over the two-year period which will result in the completion of your qualification. You are required to grade on each unit to qualify for your result.

What could this lead to?

Art and design can lead to various careers in the creative industries, such as Illustration, Photography, Architecture, Graphic Design, Animation, Game Design, Film, Prop Design, and Art Conservation. Studying art enhances creative problem-solving skills and understanding of complex concepts, which are valuable across multiple fields. Completing an art and design course opens up opportunities for further education, employment, and apprenticeships. A portfolio showcasing your work will be essential for future study or employment.



CHILDREN'S PLAY, LEARNING AND DEVELOPMENT

BTEC National Extended Certificate

Entry Requirements

For entrance onto this course, you will need a minimum of five GCSEs including Maths and English at grade 4 or above.

Course overview

The content of the qualification meets the knowledge, understanding and skills that underpin the role of the early year's educator as well as gaining experience out in the workforce by completing work placement within two settings. All the content is mandatory, and will cover the following topics: Children's development, keeping children safe, observation, assessment and planning, play and learning, reflective practice, supporting children's early learning, the Early Years Foundation Stage and working with parents.

First year

Externally Assessed, Unit 1: Child development. Learners will gain an understanding of children's developmental progress from birth up to seven years 11 months.

Internally Assessed, Unit 5: Keeping children safe. Learners study the responsibilities of a professional to promote and maintain health and safety, and what to do in an emergency or when there are concerns about a child's welfare.

Second year

Externally Assessed, Unit 2: Development of children's communication, literacy, and numeracy skills. Learners will gain an understanding of how children develop literacy, language, numeracy and communication skills and how to promote and support this development.

Internally Assessed, Unit 3: Play and Learning. Learners study the benefits of play, the influence of theories and approaches to play, and how to provide and support purposeful play and learning activities for children.

Assessment structure

Assessment involves both internally assessed units of study and externally assessed, set tasks. Internal assessment is carried out by a specialist teacher following their deadline and will be marked using Pass, Merit or Distinction gradings.

External assessment involves set tasks provided and marked by the exam board. These will also be marked using Pass, Merit or Distinction gradings.

Students must grade on all parts of the course in order to achieve a qualification.

Learners will complete 50 hours' work experience in the sector. Assessed placement in two settings over the two years.

What could this lead to?

This qualification could lead to roles which include: Early Years Educator, Nanny or Child Minder.

It can be taken alongside other Level 3 qualifications as part of a two-year programme of learning, enabling learners to progress to a range of degree courses in the early years sector. The qualification carries UCAS points and is recognised by higher education providers as contributing to meeting admission requirements to many relevant courses.

HEALTH AND SOCIAL CARE

OCR Cambridge Technical Extended Certificate



Entry Requirements

For entrance onto this course, you will need a minimum of five GCSEs including Maths and English at grade 4 or above.

Course overview

The Cambridge Technical in Health and Social Care uses direct experience to help students develop the underpinning knowledge as well as practical and personal skills required to work in this sector. They learn how to deliver person-centred care and support to meet the needs of a variety of service-users

First year

Internally assessed, unit 1: Building positive relationships in health and social care. Introduction to the many different relationships within the health and social care sector. Along with the concept of the person-centred approach, this will support building relationship skills.

Externally assessed, unit 2: Equality diversity and rights in health and social care. Understanding the implications of diversity on practice and the effects of discriminatory practice on individuals who require care and support and how legislation and national initiatives can support and promote anti-discriminatory practice. This is assessed through a written task of 1 hour 30 minutes.

Externally assessed, Unit 3: Health, safety and security in health and social care. Introduction to health, safety and security in health and social care. This is assessed through a written task of 1 hour 30 minutes.

Second year

Externally assessed, Unit 4: Anatomy and physiology for

health and social care. Introduction to the basic structure and functions of the body systems involved in everyday activities and maintenance of health, including cardiovascular, respiratory, and digestive systems. This is assessed through a written task of 2 hours.

Internally assessed, Unit 10: Nutrition and health.

Introduction to nutritional health and the components of good nutrition.

Internally assessed, Unit 13: Sexual health, reproduction, and early developmental stages. Health and wellbeing are of vital importance even before you are born.

Assessment structure

Assessment involves both internally assessed units of study and externally assessed, set tasks. Internal assessment is carried out by a specialist teacher following their deadline and will be marked using pass, merit or distinction gradings. External assessment involves set tasks provided and marked by the exam board. These will also be marked using pass, merit or distinction gradings.

Students must grade on all parts of the course in order to achieve a qualification.

What could this lead to?

This course will open up a range of opportunities for you for further and higher education, employment and apprenticeships depending on your preference. We recommend you completing a Health and Social Care course if you are considering a future in employment or a degree i.e Midwife, Nurse, Social Worker, Paramedic, Doctor, Health Visitor, Occupational Therapist, Radiographer.

INFORMATION TECHNOLOGY

BTEC National Extended Certificate



Entry Requirements

For entrance onto this course, you will need a minimum of five GCSEs including Maths and English at grade 4 or above.

Course overview

Information Technology allows students to study the fundamental knowledge of Information Technology covering the role and implications of using Information Technology systems and cyber-security threats and how to manage attacks. Students will also develop important skills for creating websites to meet a specific purpose and to manage data through the development of a relational database solution.

First year

Externally Assesses Unit 1: Information Technology Systems. A 120-minute written assessment of short and long answered questions based on knowledge of IT systems and the implications of their use in personal and professional situations.

Internally Assessed Unit 3: Website Development. Students will investigate fundamental principles in website development. They will design and develop a website in response to a client brief.

Second year

Externally Assessed Unit 2: Cyber Security and Incident Management. A 135-minute written assessment of short- and long-answer questions. Students will need to explore and relate to contexts and data presented. The questions will assess understanding of cyber security threats, the methods used

to counter them and the forensics used to investigate an attack.

Internally Assessed Unit 4: Rational Database Development. Students will examine relational database development principles to understand the importance of data storage and normalisation techniques and apply their skills to design and develop data storage solutions to meet a client's requirements.

Assessment structure

Externally assessed units are set and assessed by the exam board, through written examination papers.

Internally assessed units are marked by teachers and moderated following completion. Both practical and written evidence is required for assessment for these units.

Students must grade on all parts of the course in order to achieve a qualification.

What could this lead to?

Upon successfully completing this two-year course, students can progress to a variety of further or higher education programs, not just within the IT sector but across numerous subject areas. Additionally, you may explore career opportunities in Information Technology, Business, or related fields. Studying Computer Science provides a solid foundation for higher education in computing or data analytics and serves as excellent preparation for apprenticeships or employment in software development.

PERFORMING ARTS

BTEC National Extended Certificate



Entry Requirements

For entrance onto this course, you will need a minimum of five GCSEs including Maths and English at grade 4 or above. Additionally, students must also be practically competent and confident in a range of activities and performances, this is due to practical assessments within the course.

Course overview

Students will study both the practical and theoretical aspects of performing arts over the two years, covering performance, practical exploration, and the application of specialist skills and techniques, as well as individual and group performances. Research, analysis, and commissioning aim to develop essential skills for further study in performing arts, including research methodology, independent learning, extended writing, sourcing, idea generation, evaluating information, and drawing conclusions.

First year

Externally assessed unit 1: Investigating practitioner's work. A theory-based exploration and analysis of practitioner's work concluding with a three hour assessed written task.

Internally assessed unit 2: Developing skills and techniques for live performance. A focus on technical performance skills and techniques

Second year

Externally assessed unit 3: Group performance workshop. A practical and written assessment where you perform in groups concluding with a five hour assessment across a

number of sessions.

One internally assessed, optional unit specialising in either dance, acting or musical theatre depending on preference.

Assessment structure

This course is made up of both internally and externally assessed units which must be concluded for final grading. Grading is done through Pass, Merit and Distinction with each unit assessed. Externally assessed units are set and assessed by the exam board, whilst internally assessed units are moderated following completion. For both internally and externally assessed units, assessment could be completed through either or both practical and written evidence.

What could this lead to?

This qualification enables learners to develop comprehensive performance abilities along with valuable transferable skills such as self-confidence, self-presentation, personal discipline, time management, and organisational skills, all of which are valued by both higher education and employers. Students who excel in this course have the opportunity to continue their studies within the performing arts sector or consider employment and apprenticeships in related areas. Career pathways may include acting for stage and screen, floor management in mainstream TV, Theatre Performance, Drama Therapy as a Drama Practitioner, Playwriting and Teaching.

PERFORMING ARTS

BTEC National Diploma



Entry Requirements

For entrance onto this course, you will need a minimum of five GCSEs including Maths and English at grade 4 or above. Additionally, students must also be practically competent and confident in a range of activities and performances, this is due to practical assessments within the course.

Course overview

Students will study both the practical and theoretical aspects of performing arts over the two years, covering performance, practical exploration, and the application of specialist skills and techniques, as well as individual and group performances. Research, analysis, and commissioning aim to develop essential skills for further study in performing arts, including research methodology, independent learning, extended writing, sourcing, idea generation, evaluating information, and drawing conclusions.

First year

Externally assessed unit 1: Investigating practitioner's work. A theory-based exploration and analysis of practitioner's work concluding with a three hour assessed written task.

Internally assessed unit 2: Developing skills and techniques for live performance. A focus on technical performance skills and techniques.

Externally assessed unit 3: Group performance workshop. A practical and written assessment where you perform in groups concluding with a five hour assessment across a number of sessions.

One internally assessed, optional unit specialising in either dance, acting or musical theatre depending on preference.

Second year

Internally assessed unit 4: performing arts in the

community. Developing knowledge and understanding about performing in the community.

Externally assessed unit 5: Individual performance commission. A practical and research assessment with the conclusion of a two hour supervised assessment.

Internally assessed unit 6: Final live performance to an audience. Practical exploration and application of specialist skills and techniques.

One internally assessed optional unit specialising in either dance, acting or musical theatre depending on preference.

Assessment structure

This course is made up of both internally and externally assessed units which must be concluded for final grading. Grading is done through Pass, Merit and Distinction with each unit assessed. Externally assessed units are set and assessed by the exam board, whilst internally assessed units are moderated following completion. For both internally and externally assessed units, assessment could be completed through either or both practical and written evidence.

What could this lead to?

This qualification enables learners to develop comprehensive performance abilities along with valuable transferable skills such as self-confidence, self-presentation, personal discipline, time management, and organisational skills, all of which are valued by both higher education and employers. Students who excel in this course have the opportunity to continue their studies within the performing arts sector or consider employment and apprenticeships in related areas. Career pathways may include acting for stage and screen, floor management in mainstream TV, Theatre Performance, Drama Therapy as a Drama Practitioner, Playwriting and Teaching.



PERFORMING ARTS

BTEC National Extended Diploma

Entry Requirements

For entrance onto this course, you will need a minimum of five GCSEs including Maths and English at grade 4 or above. Additionally, students must also be practically competent and confident in a range of activities and performances, this is due to practical assessments within the course.

Course overview

Students will study both the practical and theoretical aspects of performing arts over the two years, covering performance, practical exploration, and the application of specialist skills and techniques, as well as individual and group performances. Research, analysis, and commissioning aim to develop essential skills for further study in performing arts, including research methodology, independent learning, extended writing, sourcing, idea generation, evaluating information, and drawing conclusions.

First year

In the first year of study, you will build a foundation in performance skills across a range of disciplines, including acting, dance, and musical theatre. Core units such as Developing Skills and Techniques for Live Performance and Group Performance Workshop will focus on enhancing your practical abilities, collaborative skills, and understanding of various performance styles. You will also study Investigating Practitioners' Work, where you will analyze the approaches and methods of key figures in the performing arts industry to deepen your own creative expression. Practical coursework will allow you to explore these skills in realistic contexts, preparing you for both solo and ensemble performances.

Second year

In the second year, the course emphasizes advanced skills and

performance projects that push you towards professional standards. You will engage in units such as Performing Arts in the Community, where you'll create and perform work tailored for specific audiences, and Individual Performance Commission, which allows you to develop a solo piece in your chosen field. Additionally, Final Live Performance to an Audience is a capstone project that showcases your growth as a performer in a public setting. Throughout the year, you'll continue to refine your techniques, creativity, and understanding of industry practices, equipping you with the confidence and skill set needed to enter the performing arts field or pursue higher education in the arts.

Assessment structure

This course is made up of both internally and externally assessed units which must be concluded for final grading. Grading is done through Pass, Merit and Distinction with each unit assessed. Externally assessed units are set and assessed by the exam board, whilst internally assessed units are moderated following completion. For both internally and externally assessed units, assessment could be completed through either or both practical and written evidence.

What could this lead to?

This qualification enables learners to develop comprehensive performance abilities along with valuable transferable skills such as self-confidence, self-presentation, personal discipline, time management, and organisational skills, all of which are valued by both higher education and employers. Students who excel in this course have the opportunity to continue their studies within the performing arts sector or consider employment and apprenticeships in related areas. Career pathways may include acting for stage and screen, floor management in mainstream TV, Theatre Performance, Drama Therapy as a Drama Practitioner, Playwriting and Teaching.

SPORT AND PHYSICAL ACTIVITY

OCR Cambridge Technical Extended Certificate



Entry Requirements

For entrance onto this course, you will need a minimum of five GCSEs including Maths and English at grade 4 or above. Additionally, students must also be practically competent and confident in a range of activities, this is due to practical assessments within the course.

Course overview

Sport and Physical Activity is ideal for students who are passionate about sports and wish to deepen their skills by exploring a wide range of theoretical aspects within the field. This course provides an in-depth understanding of the human body, the psychology behind sports, and the ways in which sport is funded and promoted to encourage widespread participation in an active, healthy lifestyle. Through specialist pathways, students will gain core knowledge and practical skills that enable them to effectively deliver sport and physical activity to diverse groups, preparing them for a variety of roles within the sports industry.

First year

Externally assessed Unit 1: Body Systems and the effects of physical activities. Written assessment lasting 1 hour 30 minutes.

Internally assessed Unit 2: Sports coaching and activity leadership

Second year

Externally assessed Unit 3: Sports organisation and development. Written assessment lasting 1 hour.

Internally assessed Unit 17: Sports injury and rehabilitation

Internally assessed Unit 19: Sport and exercise psychology

Assessment structure

Assessment involves both internally assessed units of study and externally assessed, set tasks. Internal assessment is carried out by a specialist teacher following their deadline and will be marked using pass, merit or distinction gradings.

External assessment involves set tasks provided and marked by the exam board. These will also be marked using Pass, Merit or Distinction gradings.

What could this lead to?

We recommend completing a course in sport and physical activity if you're considering a career or degree in the sport and leisure sector, including roles like PE Teacher, Sports Coach, Personal Trainer, Sports Journalist, Leisure Manager, or Activity Leader. This qualification provides UCAS points and, when taken as part of a two-year program alongside other qualifications, is recognized by many higher education providers for meeting admission requirements across a range of courses.

SPORT AND PHYSICAL ACTIVITY

OCR Cambridge Technical Diploma



Entry Requirements

For entrance onto this course, you will need a minimum of five GCSEs including Maths and English at grade 4 or above. Additionally, students must also be practically competent and confident in a range of activities, this is due to practical assessments within the course.

Course overview

Sport and Physical Activity is ideal for students who are passionate about sports and wish to deepen their skills by exploring a wide range of theoretical aspects within the field. This course provides an in-depth understanding of the human body, the psychology behind sports, and the ways in which sport is funded and promoted to encourage widespread participation in an active, healthy lifestyle. Through specialist pathways, students will gain core knowledge and practical skills that enable them to effectively deliver sport and physical activity to diverse groups, preparing them for a variety of roles within the sports industry.

First year

Externally assessed Unit 1: Body Systems and the effects of physical activities. Written assessment lasting 1 hour 30 minutes.

Internally assessed Unit 2: Sports coaching and activity leadership

Externally assessed Unit 3: Sports organisation and development. written assessment lasting 1 hour.

Internally assessed Unit 8: Organisation of sports events

Internally assessed Unit 11: Physical activity for specific groups.

Internally assessed Unit 12: Nutrition and diet for sport

Second year

Externally assessed Unit 4: Working safely in sport, exercise, health and leisure. Written assessment lasting 1 hour 30 minutes.

Internally assessed Unit 5: Performance analysis in sport and exercise

Internally assessed Unit 13: Health and fitness testing for sport and exercise

Internally assessed Unit 17: Sports injury and rehabilitation

Internally assessed Unit 18: Practical skills in sport and physical activities

Internally assessed Unit 19: Sport and exercise psychology

Assessment structure

Assessment involves both internally assessed units of study and externally assessed, set tasks. Internal assessment is carried out by a specialist teacher following their deadline and will be marked using Pass, Merit or Distinction gradings.

What could this lead to?

We recommend completing a course in sport and physical activity if you're considering a career or degree in the sport and leisure sector, including roles like PE Teacher, Sports Coach, Personal Trainer, Sports Journalist, Leisure Manager, or Activity Leader. This qualification provides UCAS points and, when taken as part of a two-year program alongside other qualifications, is recognized by many higher education providers for meeting admission requirements across a range of courses.



SPORT AND PHYSICAL ACTIVITY

OCR Cambridge Technical Extended Diploma

Entry Requirements

For entrance onto this course, you will need a minimum of five GCSEs including Maths and English at grade 4 or above. Additionally, students must also be practically competent and confident in a range of activities, this is due to practical assessments within the course.

Course overview

Sport and Physical Activity is ideal for students who are passionate about sports and wish to deepen their skills by exploring a wide range of theoretical aspects within the field. This course provides an in-depth understanding of the human body, the psychology behind sports, and the ways in which sport is funded and promoted to encourage widespread participation in an active, healthy lifestyle. Through specialist pathways, students will gain core knowledge and practical skills that enable them to effectively deliver sport and physical activity to diverse groups, preparing them for a variety of roles within the sports industry.

First year

In the first year of study, you will explore a wide range of topics focused on the foundations of sport science and practical physical activity skills. You will study units like Body Systems and the Effects of Physical Activity, which will provide an understanding of physiological responses to exercise, and Sports Coaching and Activity Leadership, where you'll gain essential coaching skills and learn to lead activities effectively. Additionally, Sports Organisation and Development will give insight into how sports structures operate, from local to national levels. You will also complete practical coursework that emphasises skills in performance analysis, physical activities tailored for specific groups, and the fundamentals of working safely in sports, leisure, and health environments.

Second year

In the second year, the course expands to cover specialised areas like Sports Injuries and Rehabilitation, Improving Fitness for Sport and Physical Activity, and Health and Fitness Testing for Sport and Exercise. You'll delve into subjects such as Sport and Exercise Psychology and Sport and Exercise Sociology, which explore the mental and social aspects of sports participation and competition. This year, you will also focus on understanding the Business of Sport and how to organise and execute sports events effectively. Practical assessments will allow you to apply your skills in managing sports facilities and leading group exercise, ensuring you're equipped with a comprehensive skill set for a career in the sports industry.

Assessment structure

Assessment involves both internally assessed units of study and externally assessed, set tasks. Internal assessment is carried out by a specialist teacher following their deadline and will be marked using Pass, Merit or Distinction gradings.

What could this lead to?

We recommend completing a course in sport and physical activity if you're considering a career or degree in the sport and leisure sector, including roles like PE Teacher, Sports Coach, Personal Trainer, Sports Journalist, Leisure Manager, or Activity Leader. This qualification provides UCAS points and, when taken as part of a two-year program alongside other qualifications, is recognized by many higher education providers for meeting admission requirements across a range of courses.



TRAVEL AND TOURISM

BTEC National Extended Certificate

Entry Requirements

For entrance onto this course, you will need a minimum of four GCSEs including Maths at grade 4 or above and English at grade 5 or above.

Course overview

Travel and Tourism is designed for post-16 learners who wish to advance their education through applied learning, with the goal of progressing to higher education and careers within the travel and tourism sector. This course offers a comprehensive program that combines foundational knowledge with project-based assessments, equipping students with the skills needed to succeed in both employment and further studies. Key content areas include the world of travel and tourism, global destinations, principles of marketing in travel and tourism, and visitor attractions.

First year

In the first year of study learners will explore both internally and externally assessed units of study. The world of travel and tourism explores the key components and scale of the industry, using data to analyse key trends and their impact.

The principles of marketing in travel and tourism involves investigating the use of marketing in organisations and how to meet customer expectations in order to inform promotional campaigns.

Second year

In the second year of study, learners consolidate their understanding from year one, building on this to further explore the industry. Global destinations involve learners investigating and analysing information regarding the features

and appeal of travel planning, the factors and trends and the changing popularity of different places.

Learners develop analytical skills as they investigate the nature and role of both the built and natural visitor attractions, their commercial success, appeal, response to diverse visitor needs and the importance of delivering a memorable visitor experience.

Assessment structure

Assessment involves both internally assessed units of study and externally assessed, set tasks. Internal assessment is carried out by a specialist teacher following their deadline and will be marked using Pass, Merit or Distinction gradings.

External assessment involves set tasks provided and marked by the exam board. These will also be marked using Pass, Merit or Distinction gradings.

All assessments include written prose and learners are expected to be proficient in using written communication to support their entries for this qualification.

What could this lead to?

The qualification carries UCAS points and if it is taken alongside other qualifications as part of a two-year programme of learning, then it is recognised by higher education providers as contributing to meeting admission requirements for many courses. It will support entry to many higher education courses, depending on the other qualifications learners have taken. Learners should always check the entry requirements for degree programmes with specific higher education providers. The qualification can also support progression to employment directly or via an Apprenticeship.

ENGLISH LITERATURE

AQA A-Level



Entry Requirements

For entrance onto this course, you will need a minimum of four GCSEs including Maths at grade 4 or above and English at grade 6 or above.

Course overview

The A-Level English Literature course is designed for students who have a keen interest in examining the relationships between texts and the cultural and historical contexts in which they were written, received, and understood. Ideal for those who enjoy reading, analyzing language, exploring poetry, drama, and plays, as well as debating and challenging interpretations, this course offers a dynamic approach to studying literature. Students will engage with texts through a variety of methods, including exploring literary themes over time, studying literature from historicist perspectives of both diachronic and synchronic analysis, reading a diverse selection of texts curated by AQA, and developing varied approaches to writing about literature.

First year

Externally assessed, Unit 1: Love through the ages.

Exploring different texts including Shakespearean plays and poetry. Studying the Shakespearean play 'Othello', an anthology of love poetry and two prose texts. There is a wide selection of prose texts available to study, from the 19th century 'Wuthering Heights' by Emily Bronte to modern novels such as 'The Great Gatsby' by F. Scott Fitzgerald. This unit concludes with a three-hour written examination worth 40% of the final qualification.

Second year

Externally assessed, Unit 2: Texts in shared contexts. Involves both independent critical study and written

examination. Includes the study of texts from Modern Times: Literature from 1945 to the present day, focusing on texts that reflect the social, political, and moral changes in our world since the end of the Second World War. This unit concludes with a two hour and thirty minute written examination worth 40% of the qualification and a critical study of no more than 2500 words worth 20% of the qualification.

Assessment structure

Assessment of the A-Level English Literature course includes 80% externally assessed examination and 20% non-examined assessment.

Unit 1: Love Through the Ages (Examination: 3 hours)

Section A: Shakespeare – one play text

Section B: Unseen Poetry – AQA Poetry Anthology

Section C: Comparing Texts – comparison of two texts (poetry and prose)

Unit 2: Texts in Shared Contexts: Modern Times: Literature from 1945 to the present day (Examination: 2 hours 30 mins)

Section A: Set Texts – one prose text

Section B: Contextual Linking – one poetry text and one drama text

What could this lead to?

This will help students who are interested in studying English at university. You could also be interested in journalism, writing blogs, becoming a Teacher, Script Writer or even an Actor. English Literature could be picked alongside other courses to be the basis for many careers.

HISTORY

Edexcel A-Level



Entry Requirements

For entrance onto this course, you will need a minimum of four GCSEs including Maths at grade 4 or above and English at grade 6 or above.

Course overview

Edexcel A Level History course develop students' interest and enthusiasm for history and an understanding of its intrinsic value and significance. Students will build on their understanding of the past through experiencing a broad and balanced course of study. They will improve as effective and independent learners, and as critical and reflective thinkers with curious and enquiring minds. History A Level course acquires an understanding of the nature of historical study, for example that history is concerned with judgements based on available evidence and that historical judgements are provisional. By the end of the studies, students will be able to organise and communicate historical knowledge and understanding in different ways, arguing a case, and reaching substantiated judgements.

First year

Paper 1: Germany and West Germany, 1918–89. This option comprises a study in breadth, in which students will learn about key political changes experienced in a unified Germany from 1918, and then West Germany after the Second World War, and the impact of these changes on German economic, social and cultural developments.

Paper 2: The rise and fall of fascism in Italy, c1911–46. This option comprises a study of Italian history in the years c1911–46; turbulent years that saw the collapse of the liberal state, the creation of a fascist dictatorship and a return to democracy in the aftermath of the Second World War.

Second year

Paper 3: Lancastrians, Yorkists and Henry VII, 1399–1509. This is a study of a period that has inspired playwrights and popular novelists from Shakespeare to George Martin. Here is a real Game of Thrones with murders, plots, battles and betrayals. The 110 years cover the reigns of seven kings, the last six Plantagenets and the first Tudor. It begins with a violent seizure of the throne by the Duke of Lancaster, cousin of the reigning monarch Richard II, who is then starved to death in Pontefract Castle. It is an appropriate beginning for this saga which ends with a new dynasty establishing a hold on the throne at the end of the century.

Coursework:

Students carry out an independently researched enquiry requiring them to analyse and evaluate historical interpretations and to organise and communicate the findings. The assignment is set by the centre on a question, problem or issue that has generated disagreement among historians.

Assessment structure

Paper 1: 2 hours 15 mins exam (30%)

Paper 2: 1 hour 30 mins exam (20%)

Paper 3: 2-hour 15 mins exam (30%)

Coursework – Internally assessed, externally moderated (20%)

What could this lead to?

Studying History not only deepens your understanding of the past but also develops invaluable skills such as analysis, research, communication, and problem-solving. A degree in History can open doors to numerous career paths, including Teaching, Librarianship, Banking, Commerce, Law, Publishing, Museum and Gallery Curation, Social Work, Archaeology, Politics, International Business, Tourism, Heritage Management, Journalism, and many more fields.

MATHEMATICS

AQA A-Level



Entry Requirements

For entrance onto this course, you will need a minimum of five GCSEs including Maths at grade 7 or above and English at grade 5 or above.

Course overview

The A-Level Mathematics course is perfect for students eager to enhance their analytical and problem-solving skills, providing techniques that are applicable in various real-life situations. You will explore essential topics like quadratic graphs, inequalities, coordinate geometry, and simultaneous equations, while also delving into advanced concepts such as differentiation, integration, and mathematical proofs. With a blend of pure mathematics and applied elements, this course allows you to analyse real-world problems, making it an ideal choice for those passionate about mathematics and looking to expand their knowledge.

First year

Pure Maths and Mechanics
Pure Maths and Statistics

Second year

Pure Maths
Mechanics
Statistics

Pure Mathematics, Mechanics, and Statistics are the subjects covered in the A Level Mathematics syllabus. Two thirds of the course is composed of topics related to pure mathematics, with

the other third being made up of applied mathematics, which is divided equally between mechanics and statistics. It gives students a solid foundation in the mathematical methods and tools they will frequently require both at school and in the industry.

Assessment structure

Assessment structure

Three 2 hour written exams at the end of Year 2. A mix of question styles, from short, single-mark questions to multi-step problems.

What could this lead to?

Maths is one of the biggest facilitating subjects, and it is essential for many higher education courses and careers. A-level mathematics will help students access university courses and broaden their career choices. Mathematics is useful in all careers, especially those related to Engineering, Business, Economics, Accountancy and the Sciences.

The qualification carries UCAS points and if it is taken alongside other qualifications as part of a two year programme of learning, then it is recognised by higher education providers as contributing to meeting admission requirements for many courses.

SOCIOLOGY

AQA A-Level



Entry Requirements

For entrance onto this course, you will need a minimum of five GCSEs including Maths at grade 4 or above and English at grade 5 or above.

Course overview

Sociology is the study of society and the people within it, making it an intriguing subject for students keen to learn about the world around them. It requires an inquisitive mind to challenge the factors and processes that influence human behaviors and interactions. Through this course, students will be equipped with the knowledge and skills to understand, explain, and critically analyse the causes of human behavior and its impact on society. They will develop a critical awareness of the role, purpose, and effects of social institutions while gaining insights into the social, educational, legal, and political changes occurring in society. Additionally, students will examine the influence of both formal and informal systems on various groups, fostering a sense of tolerance and understanding of gender, class, age, ethnicity, and diversity.

First year

Students study Education and Families & Households. Students learn about the functions of the education system and how it prepares young people for the next step in their life. Learners take a critical approach to the education system; looking deep into the Education Policy and how the factor and processes both inside and outside of the school can impact achievement. Learners then apply their learning to the Family; looking at how the concept of 'family' has changed over the past 100 years. Learners will explore different family types, roles within the family, childhood and the potential dark side of the family. Students will gain knowledge of the methods used in sociological research and critically analyse how effective they are.

Second year

Students study Beliefs in Society and the role and impact that religion can have on a society and the members in it. Learners will explore concepts such as religious fundamentalism, secularisation and the relationship between different social groups and their religious belief and practice. Students will go on to explore Crime & Deviance. Learners will explore the reasons for crime and deviance in society and analyse the reasons for their behaviour; linking to previous learning from other units. Students will apply sociological theory and perspectives and analyse the extent crime is increasing in our society evaluating the possible reasons for this. Learners will look at global crimes, individual crimes and also white collar and corporate crimes as part of their learning.

Assessment structure

A Level Sociology is purely examination based and learners sit 3 examinations at the end of the second year which are all 2 hours each.

Paper 1: Education with Theory & Methods

Paper 2: Topics in Sociology (Beliefs in Society and Families & Households)

Paper 3: Crime & Deviance with Theory & Methods

What could this lead to?

This course would be useful for anyone interested in a career in Education, Social Work, the Legal System and Criminal Justice System, Police, Probation, or Prison Service. Furthermore, for anyone interested in Politics or the Civil Service, this course is highly suitable. Studying Sociology shows that a learner has a critical mind and the ability to investigate social patterns and analyse social issues.

STUDENT LEADERSHIP TEAM



The Sixth Form here at the Skegness Academy is compassionate and determined to make you achieve the best grade you can. They offer some many different opportunities here such as the Leadership Team, as it has allowed me to develop my leadership and team working skills. The Skegness Academy Sixth Form has a very supportive atmosphere with smaller class sizes, allowing more personalised attention by the teachers. They have amazing career advice and resources which has helped me to decide what university and post 18 options I wanted

to pick. Coming here for Sixth Form is a great choice, this is due to the fact that it opens up a world of opportunities for your future. You'll get to dive deep into subjects you are passionate about, which not only prepares you for university but also equips you with skills needed for the future life. Overall, Sixth Form here at the Skegness Academy is a pivotal time for personal and academic growth.



The Sixth Form here at the Skegness Academy is honestly amazing. There are so many different opportunities that have allowed me to develop as a person, and within the school, they have offered me loads of different courses that will help me in the future. These courses include things such as Mentoring and a Reader Leader; these have allowed me to develop my transferable skills, such as my communication skills, teamwork, and leadership skills. Sixth Form has also allowed me to help and support with the wider community of the school within

the Leadership Team. Being the president of the Leadership Team has allowed me to develop my leadership skills while leading such a good team of Sixth Formers. It has also helped with my confidence and public speaking. It has offered me so many opportunities and opened so many new pathways to life.

'There are so many different opportunities that have allowed me to develop as a person, and within the school'.

Sixth Form students have the opportunity to become a member of the Student leadership team within the Sixth Form.

Our Student Leadership Team is appointed in September through to July. Throughout the year they are responsible for representing the Academy and its students both within the Academy and the community, as well as being part and supporting with whole school student voice.

As a member of the Student Leadership Team, students can learn how to make a good difference and take on tasks and duties that will prepare them for life after Sixth Form. Being a good role model is an important aspect of being a student in the Sixth Form. Our students have the opportunity to improve their leadership, communication, and teamwork skills while also developing resilience and independence.



ENRICHMENT OPPORTUNITIES

We offer a range of enrichment activities which go beyond the curriculum.

The Super Curriculum takes the form of weekly timetabled classes by teachers and experts from outside school. By taking part in any of the super curriculum activities, students will gain valuable skills and confidence, along with transferable skill, which will help with personal development and future employment or education.

Health and Fitness

There is evidence that physical activity and physical fitness can support with improved academic performance, but also student's mental health and physical wellbeing.

Creative Learning

It is important as we get older that we continue to acknowledge the importance of creative learning and the transferable skills this provides for future career options. Building up imaginative and creative skills is fundamental to feeding our knowledge.

Surviving Cooking

Cooking is a life skill. Students will be learning a range of culinary skills and will learn a variety of techniques, along with meal planning and budgeting.

Looking after your mental health

This is about encouraging students to think about, discuss and explore mental health, what it means to them and how they can help themselves to improve this.

Career Talks

To ensure students are getting the support needed for their next steps, life after Sixth Form, there will be a dedicated focus on different careers, university information and guidance.

Not only do we want to ensure you have a strong academic experience, but we also want to prepare you for your future by providing a range of opportunities to gain new experiences, develop life skills, pursue interests, but most importantly progression to university and employment.

These opportunities stress importance on problem-solving abilities, inter-personal qualities, teamwork, communication, numeracy, and the effective use of information technology.

There will be a range of internal and external opportunities no matter what your personal or career interests may be. We want to support you in finding yourself once you have finished your journey here at the Skegness Academy in a much better position to apply for those courses, apprenticeships, or jobs in the future.

Activities you can experience at the Skegness Academy:

Fundraising and charity
Community Champions
Peer Mentors
Yoga
University visits
Literacy Lead
Sport Leaders
Work Experience
Inspirational speakers
Student Leadership
Duke of Edinburgh

Is there is an activity that you would like to do, but it isn't listed? Tell us about it so we can aim to support it.

CAREER GUIDANCE

You will be making decisions in the Sixth Form that will have an impact on your future career. Whatever path you take after Sixth Form, you will receive support and advice to help you plan ahead. Our goal is to assist you in making educated and practical decisions regarding your future. You will be encouraged to take charge of your own future.

Here at the Skegness Academy, we provide high quality careers advice, support and guidance to support our students to make informed choices about their options with Further Education, Higher Education, Apprenticeships, and employment.

Students get individual guidance and action plans, along with work experience, UCAS support, University talks, university trips, inspirational speakers, and employment advice.

Parents have the opportunity to attend information evenings, including our Higher Education Evening dealing with all aspects of applications, including financial issues. This is in partnership with Lincoln University.

We recognise how important it is for students to understand and appreciate the options available to them and have the confidence and ability to pursue their own realistic pathways. Careful planning goes into the future of all our students, and we are very proud of each and every one, and we believe each will go onto pursue inspiring lives.

Each student will have a one-to-one meeting with either the Head of Sixth Form or

the Careers Advisor to discuss their plans for either University, work or Apprenticeships.

UCAS

Students are given personal guidance through the UCAS process, working with the Head of Sixth Form and the Career Advisor. How to apply through UCAS, personal statements, student finance, interview techniques, medical applications and Oxbridge applications. It is advisable for students who want to go into Higher Education to attend open days.

Work Experience

In Year 12, students undertake a two-week placement of work experience during Term 6 of the school year. The work experience should reflect the career interests of the students. This is a compulsory part of the Year 12 curriculum as it is a significant experience which can form a vital part of the UCAS application or route into employment after Sixth Form.

Don't panic if you can't decide which direction to go in or which courses would best suit your needs, we are here to help!



GUIDANCE AND SUPPORT

It is vital that you have a well-rounded experience while you study here at the Skegness Academy. Not only do we want to ensure you have an academic experience we also want to prepare you for your future by providing a range of opportunities to gain new experiences, develop life skills and pursue interests.

To support and enable students to achieve the best possible grades, we use Quality Assurance and Tracking Systems, which provide support by giving students subject-specific target grades, based on their ability and prior performance. Students are also graded on their Attitude to Learning and progress is reviewed regularly, and action taken to plan for improvement when necessary. Attendance to lessons is carefully monitored through the Attendance Policy.

ATTENDANCE AND PUNCTUALITY

Attendance and punctuality are vital if success is to be achieved on Sixth Form courses. Punctuality to tutorial time, lessons, independent study, and the completion of coursework and homework are also expected. Failing to complete work on time may result in a student contract, coursework being repeated or privileges being removed.

RELIGIOUS EDUCATION

The Academy has a statutory obligation to deliver Religious Education in the Sixth Form. This is done through tutor-led activities and through assemblies.

TUTOR TIME

Every student will be assigned to a tutor group, which will serve as the first point of contact for any academic or pastoral concerns. The relationship between students and their tutor is crucial; they will provide help by keeping track of academic and social growth. Encouraging participation, commitment, and high work and behaviour standards.

During tutor time, students will participate in themes aimed at increasing their knowledge and understanding, as well as developing skills that will help them become informed citizens who are ready for modern Britain.

ASSEMBLIES

Sixth Form assemblies take place once a week and is an important and compulsory part of student life. With a full and varied programme, they reflect on our British values, the world we live in, and to recognise and celebrate accomplishments.

'Students in the Sixth Form benefit from a curriculum that is ambitious and well matched to their needs. Students have positive attitudes to learning and attend well. Teachers have good subject knowledge. Students do work experience and learn about Higher Education. They are well prepared for their next steps'.

OFSTED 2023

JOIN OUR **SIXTH FORM** AND BUILD YOUR FUTURE **WITH US**





SKEGNESS ACADEMY SIXTH FORM
PROSPECTUS
2025



SKEGNESS ACADEMY



SKA-allpost16@skegnessacademy.org



Skegness Academy, Burgh Road, Skegness, PE25 2QH